

ASFOUR

by Tracey Garrison

photos by Menna Hornsby, Nasr Marei,
Jennifer Odgen, Stuart Vesty

Asfour kept a watchful eye over the paddocks of Simeon Stud for 25 years. He was always standing just under his tree where he could see the majority of the day to day comings and goings of the farm. He would always let us know when the mares were not behaving and express his displeasure when we would move his favorite mares.

Marion first spotted the spindly colt in the paddock of Dr. Hans Nagel's, Katharinenhof Stud. He was just 3 months old but the most beautiful weanling she had ever seen. Marion knew he was the colt for her. Asfour was turned out in a paddock full of snow. He flew over the snow hardly leaving a hoof print. That is how he got his name. Asfour in Arabic means "little bird". I was not there but I can only imagine that Asfour knew he had Marion's heart when he looked at her with his big black eyes.

When Marion imported him to Australia he was met with much skepticism.

He arrived as a yearling and was a bit small and gangly. Not many people had any faith in his ability to produce. Marion would just smile and nod her head, she knew. He matured into one of the world's finest Arabian stallions.

He was not perfect, all horses have their faults, but he was the perfect stallion for Simeon Stud. Marion had an instinct to be able to select the perfect group of mares for him. The resulting foals grace not only Simeon pastures, but also the pastures of 6

Continents. 15 of his daughters have been retained by Simeon. Asfour never lacked for expression. His eyes were deep dark pools as big as saucers. His ears were small and tippy, almost too perfect. His muzzle was small and delicate molding perfectly into his dish. His skin was fine and very black. He was in perfect proportion.

He had something special, some special way of capturing your heart and your imagination.

Asfour was never shown, there was no need. Some stallions just command your attention and respect when they walk up to you and Asfour never walked anywhere. He was always prancing. Never uncontrolled, just the animation you expect from an Arabian stallion. His movement was amazing. Driving hocks that would almost hit his buttocks went perfectly with the extravagant lift and stretch of his front end. He was educated for both saddle and harness.

The Asfour line is being well looked after by his son Simeon Shifran (Asfour x Simeon Shavit by Anaza Bay Shabb). Shifran is a better horse than his sire. He stands on long straight legs that have just the right amount of bone. A beautifully set neck extends from a well laid back shoulder to support his finely chiseled head. He has Asfour's big black eyes and small tippy ears. Shifran has produced beyond our expectation in his first three foal crops, with an equally high standard of colts and fillies. □



2009



Asfour

1984 grey, stallion

HADEER RAS*247 Grey 1934

HADBAN ENZAH SBWM*79 Grey 1952

KAMLA RAS*382 Grey 1942

MALIK GASB*527 Grey 1970

GHAZAL SBWM*85 Grey 1953

MALIKAH GASB*92 Grey 1962

MALACHA SBWM*92 Bay 1955

HADEER RAS*247 Grey 1934

ALAA EL DIN EAO*352 Chestnut 1956

KATEEFA RAS*321 Grey 1938

HANAN GASB*276 Bay 1967

BADR IOHB*245 Chestnut 1947

MONA EAO*521 Bay 1956

MAHDIA EAO*515 Bay 1947

MANSOUR RAS*111 Grey 1921

BINT SAMIHA RAS*133 Bay 1925

SHEIKH EL ARAB RAS*228 Grey 1933

SAMHA RAS*199 Grey 1931

HADEER RAS*247 Grey 1934

BUKRA RAS*384 Grey 1942

EL SAREEI RAS*387 Bay 1942

MOHEBA AV*47 Bay 1951

MANSOUR RAS*111 Grey 1921

BINT SAMIHA RAS*133 Bay 1925

SHAHLOUL RAS*193 Grey 1931

BINT RISSALA RAS*103 Chestnut 1920

BESHEIR EL ASHKAR IOHB*233 Chestnut 1935

BADRIA IOHB*237 Chestnut 1941

HAMDAN IOHB*10 Grey 1936

EL MAHROUSA IOHB*182 Chestnut 1937

GAMIL MANIAL RAS*65 Grey 1912
NAFAA EL SAGHIRA RAS*6 Grey 1910
KAZMEEN RAS*13 Bay 1916
SAMIHA RAS*93 Chestnut 1918

MANSOUR RAS*111 Grey 1921
BINT SABAH RAS*155 Bay 1925

BAIYAD RAS*94 Grey 1918
BINT SAMIHA RAS*133 Bay 1925

MANSOUR RAS*111 Grey 1921
BINT SAMIHA RAS*133 Bay 1925

SHAHLOUL RAS*193 Grey 1931
BINT SABAH RAS*155 Bay 1925

SHAHLOUL RAS*193 Grey 1931
ZAREEFA RAS*149 Bay 1927

SID ABOUHOM RAS*285 Grey 1936
HALIMA RAS*420 Bay 1944

GAMIL MANIAL RAS*65 Grey 1912
NAFAA EL SAGHIRA RAS*6 Grey 1910

KAZMEEN RAS*13 Bay 1916
SAMIHA RAS*93 Chestnut 1918

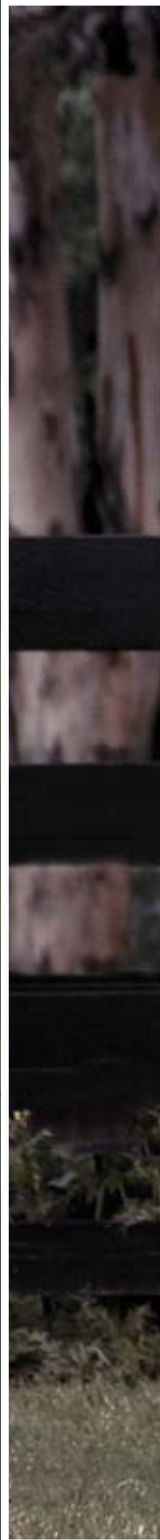
IBN RABDAN RAS*86 Chestnut 1917
BINT RADIA RAS*99 Grey 1920
IBN YASHMAK GSB*430 Chestnut 1902
RISALA GSB*388 Chestnut 1900

Desert Bred
Desert Bred

Desert Bred
Desert Bred

IBN RABDAN RAS*86 Chestnut 1917
BINT RADIA RAS*99 Grey 1920
EL ZAFIR IOHB*78 Grey 1930
EL SHAHBAA IOHB*177 Grey 1925





مزرعة الصحراء
2009





Jennifer Ogden





Simeon Saada (Asfour x Simeon Safanad) with daughters Simeon Sepharad (by Asfour) and Simeon Saadia (by Imperial Madaar)



Simeon Shifran (Asfour x Simeon Shavit)



Simeon Sibolet (Asfour x Ramses Tinah)



Simeon Salaeh (Asfour x Simeon Sibolet)



Simeon Sharav (Asfour x Simeon Shuala)



Simeon Saada (Asfour x Simeon Safanad)



slit
© 2012

Simeon Salit (Asfour x Simeon Shavit)



Seimeon Setavi, granddaughter of Asfour dam of Simeon Sahron



2012 Colt by Simeon Shifran x Simeon Sanaa



Simeon Sehavi (Asfour x Simeon Sheba)



Simeon Shifran (Asfour x Simeon Shavit)



Simeon Shuala (Simeon Shai x Ramses Tinah) with her daughters by Asfour, Simeon Suzannah and Simeon Shiraz



Simeon Stud

Owner: Simeon Stud - Marion Richmond
 44 Bulkara Road - Bellevue Hill - NSW 2023 - Australia
 ph.: +61 2 9327 1649 - mobile: +61 418 268 749 - e-mail: simeonst@bigpond.net.au